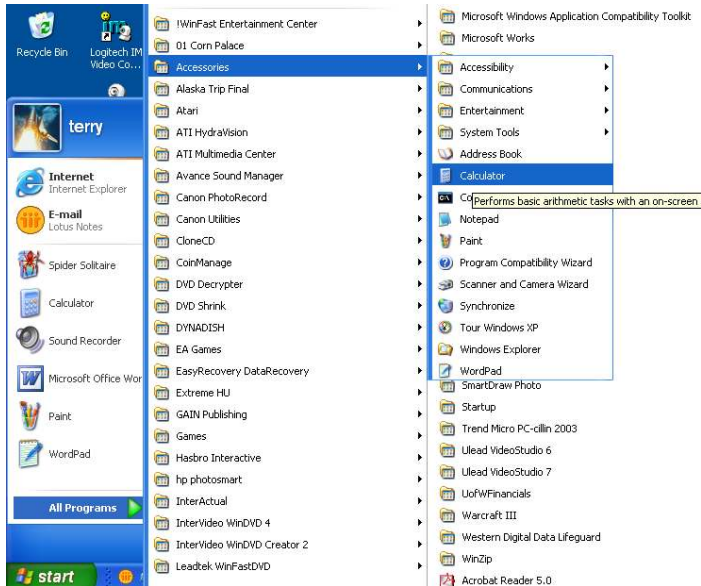


Using The Calculator

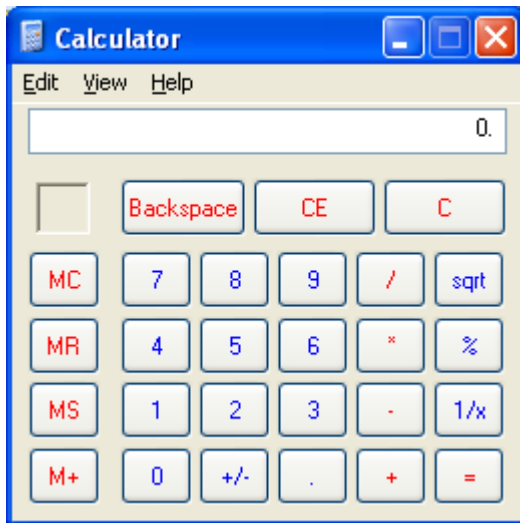
Click "Start"



Click "All Programs"

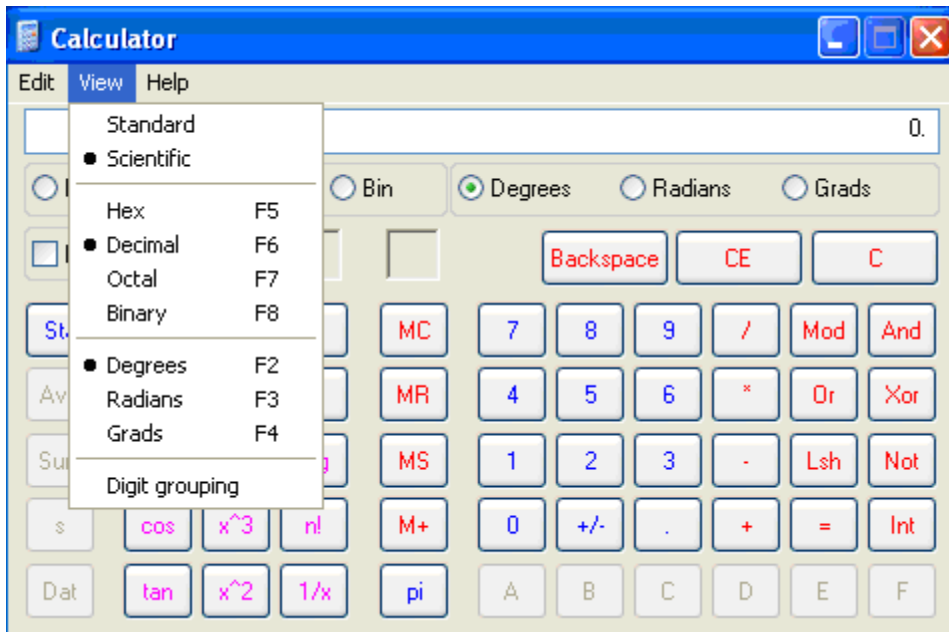
Click "Accessories"

Click "Calculator"

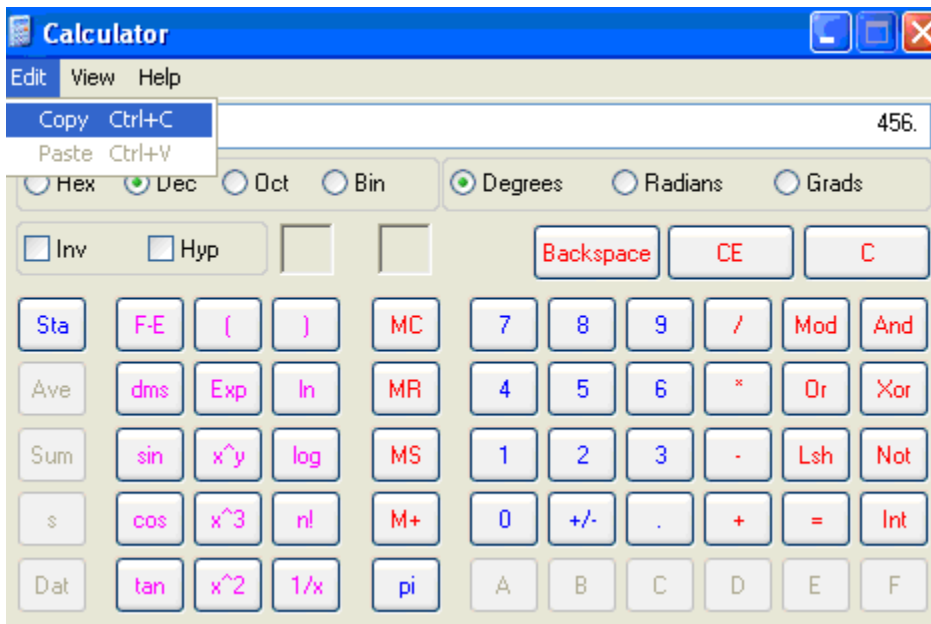


Click each button as you would press the buttons on a hand-held calculator.

To change the view of the Calculator, click "view" click "Scientific"



To copy a number displayed in the Calculator to another program, click "Edit" Click "Copy" and this will send this number to the clipboard.

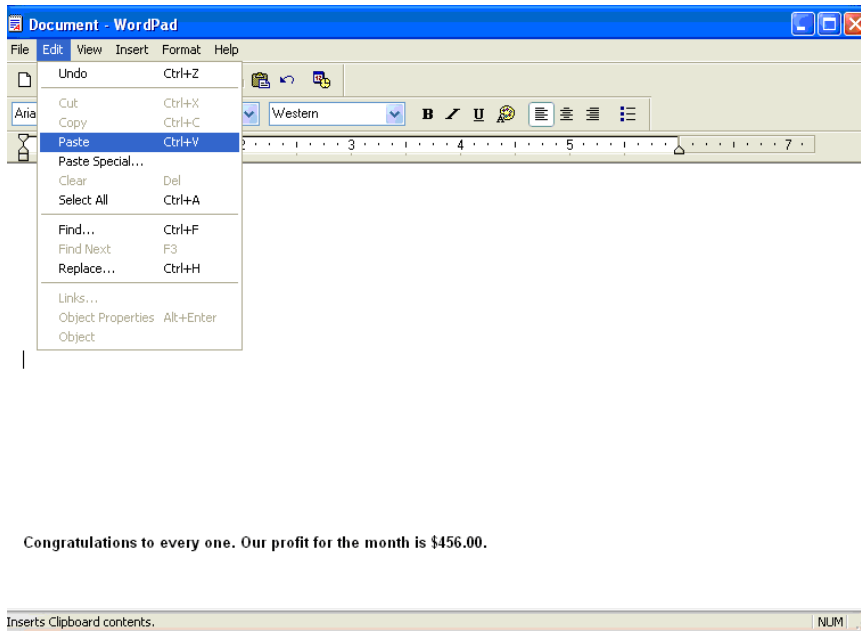


Open the document you want to paste the number in.

Eg. "WordPad.

Click the pointer where you want the number to appear on the page.

Click "Edit" and then click "Paste"



Click "✕" to close the Calculator.